

# Floral Design



# Mrs. Pinkston


Welcome to Floral Design! This class provides instruction to develop floral design techniques using silk, dried, and fresh flowers. Students will learn operation and management techniques of a floral business as well as identification, production, and cultural maintenance practices of plants used in floral design and interior landscaping. Leadership development will be provided through FFA. Each student will be expected to have a supervised agricultural experience program.

.....

## Contacting Me



 [katelyn.pinkston@anderson.kyschools.us](mailto:katelyn.pinkston@anderson.kyschools.us)

 502.839.5118 ext. 6266

.....

## Units of Study

**Unit 1:** Floral History

**Unit 2:** Art of Designing

**Unit 3:** Floral Tools & Materials

**Unit 4:** Care & Handling of Flowers

**Unit 5:** Floral Ag Sales

**Unit 6:** The Floral Business Side

**Unit 7:** Interiorscaping

**Unit 8:** Floral Design in Weddings

**Unit 9:** Floral Design in Winter

## Class Materials



Folder or Binder



Charged Chromebook



Pen or Pencil

.....

## Mrs. Pinkston's Classroom Policies

1. Respect one another.
2. Be on time.
3. Cell phones must be put away unless directed otherwise by teacher. Having a phone out will result in a referral and loss of participation points.
4. Food and drink are allowed in the class unless it becomes an issue.
5. Clean up your area in the classroom and lab every day.



## **Late Work and Absences**

- Students who are absent are responsible for all work missed. It is your responsibility to collect all missed work from Google Classroom and then talk to me if you have questions.
- You have until the unit summative assessment to turn in late work, after that it will be an automatic zero.
- Students with a long-term absence will be dealt with on an individual basis.
- If you know you are going to be gone prior to your absence, please let me know.

## **Grading Policy**

Class Weighted Categories  
Assessments (Summative): 50%  
Daily Work (Formatives): 40%  
Participation: 10%

The district grading scale will be used as follows:

A - 90-100

B - 89-80

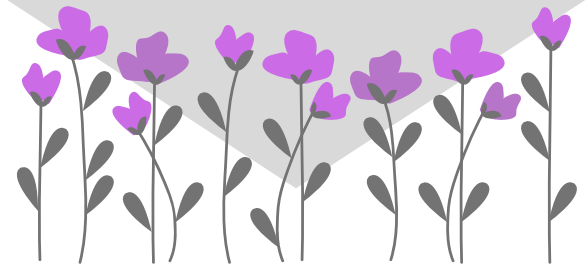
C - 79-70

D - 69-65

F - 64 or below

## **A Note from Mrs. Pinkston**

I am looking forward to having you in class this year. If at any time you have questions or concerns, please contact me. I am here to help you be successful in all aspects of your life.



## **Be Respectful**

- Follow all rules and procedures
- Use appropriate language to all members of the school and community
- Care for school materials and property
- Aim for excellence and your best self
- Build others up with your words and actions
- Cell-phone placed in caddy, all other devices put away
- Only use your own chromebook for school purposes
- Be kind in all communications
- Use the device to improve learning

## **Be Responsible**

- Use safe and appropriate behaviors
- Always give 100%
- Maintain organization
- Be mindful of others
- Honor your commitments
- Complete daily work
- Use internet for appropriate learning
- Only communicate with people you know
- Report cyberbullying or misuse
- Use airpods, earbuds, and other devices at teacher discretion

## **Be Ready**

- Be an active participant
- Come to class on time, prepared, and ready to learn
- Embrace challenges and ask questions
- Bring it to school fully charged
- Take care of it
- Be present during human interactions
- Again, cell phones should be placed in the caddy